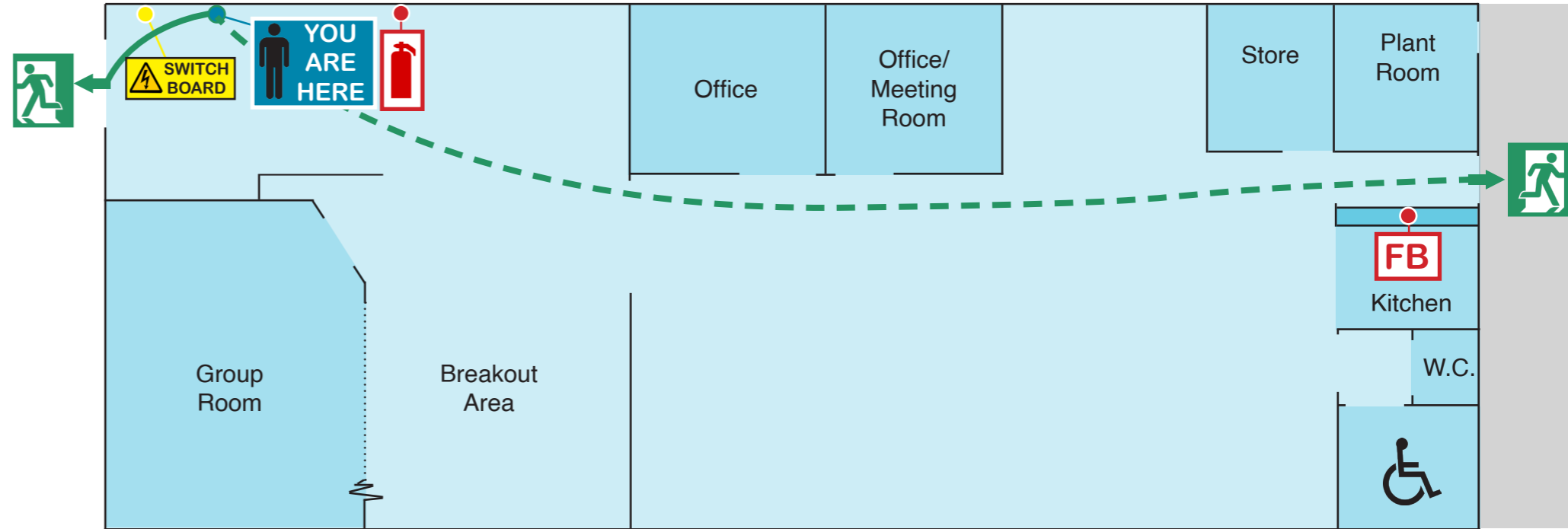


EVACUATION DIAGRAM



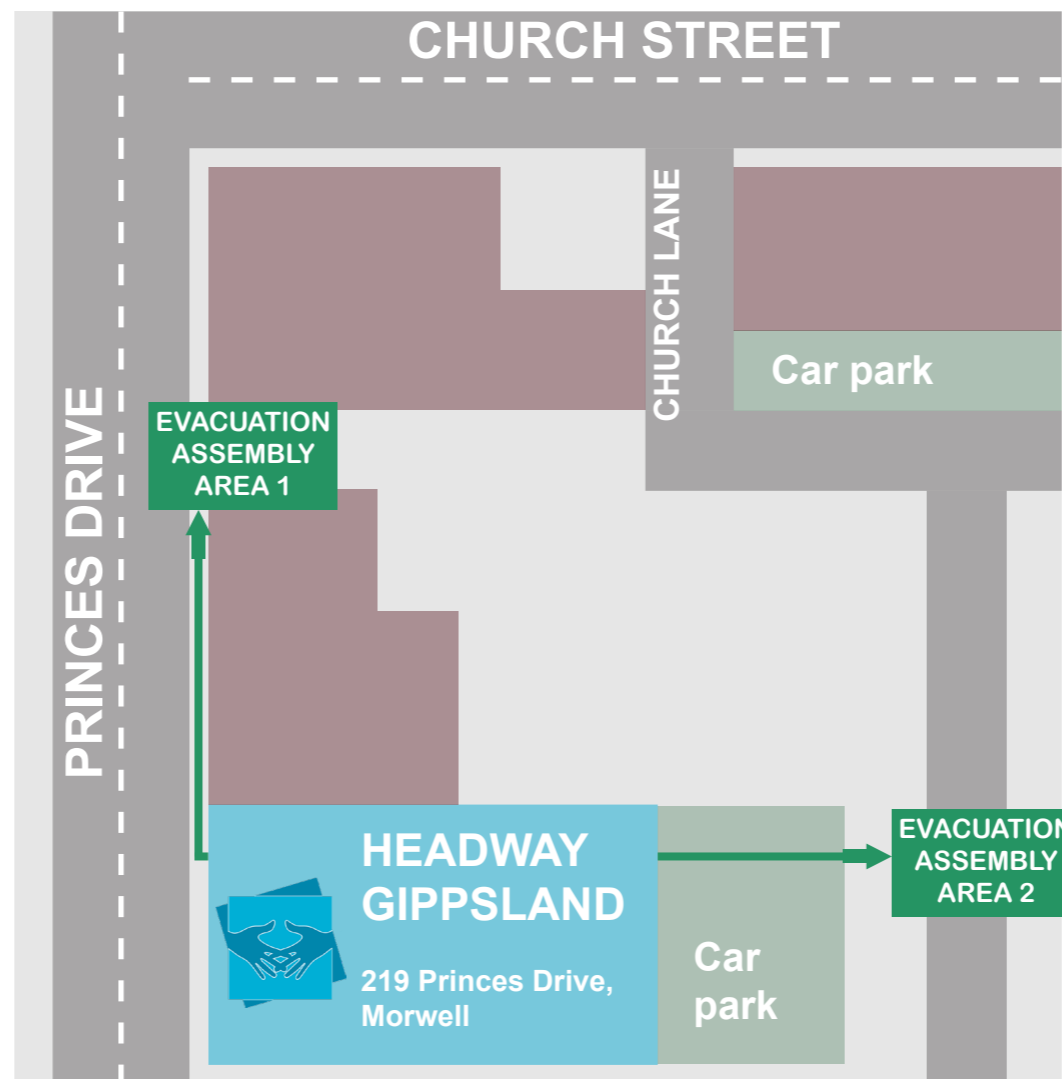
Headway Gippsland
219 Princes Drive
Morwell, VIC 3840



EMERGENCY PROCEDURES

- 1** RAISE THE ALARM, NOTIFY NEARBY OCCUPANTS
PHONE 000
- 2** ASSIST ANY PERSON IN DANGER
IF IT IS SAFE TO DO SO
- 3** MOVE TO THE NEAREST SAFE
EVACUATION ASSEMBLY AREA
- 4** REMAIN AT THE
EVACUATION ASSEMBLY AREA
REPORT ANYONE MISSING TO THE CHIEF WARDEN OR RESPONDING EMERGENCY SERVICES

EVACUATION ASSEMBLY AREAS



LEGEND

- Exit point
- Fire blanket
- Fire extinguisher
- Electric switchboard
- Evacuation route via front door
- Evacuation route via rear door

EMERGENCY TONES

ALERT TONE

WHEN ADVISED BY CHIEF FIRE WARDEN
STANDBY FOR FURTHER ANNOUNCEMENTS

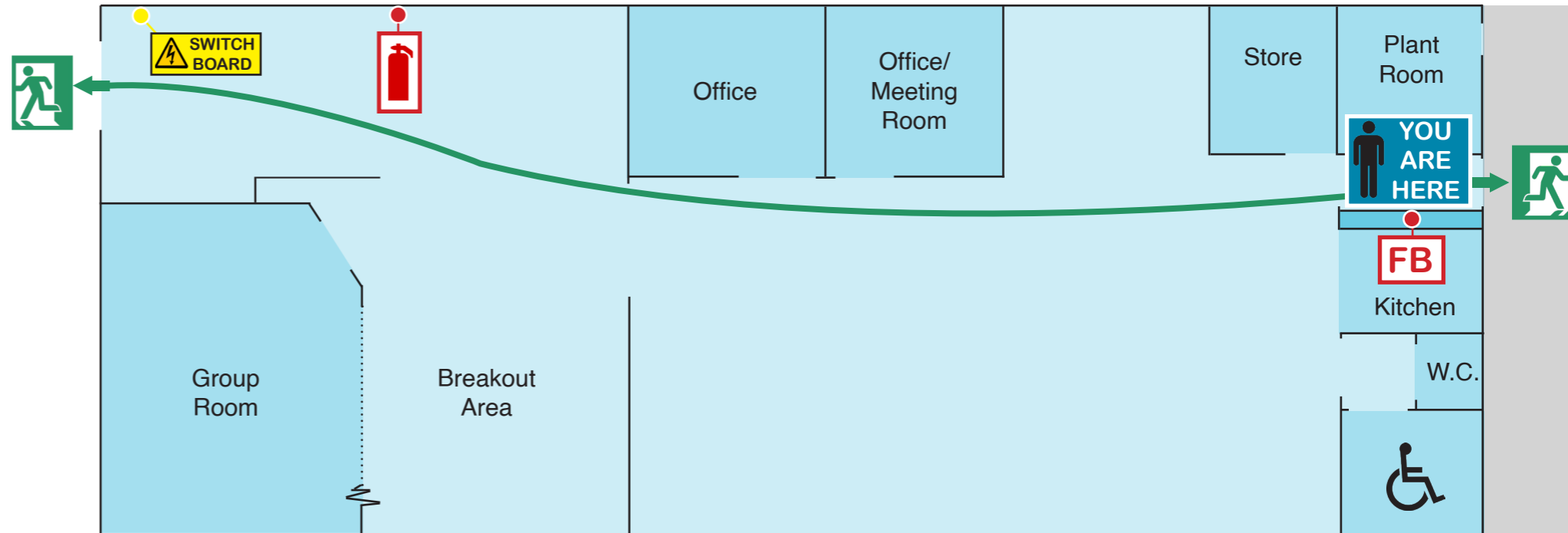
EVACUATION TONE

WHEN ADVISED BY CHIEF FIRE WARDEN
COMMENCE EVACUATION

EVACUATION DIAGRAM



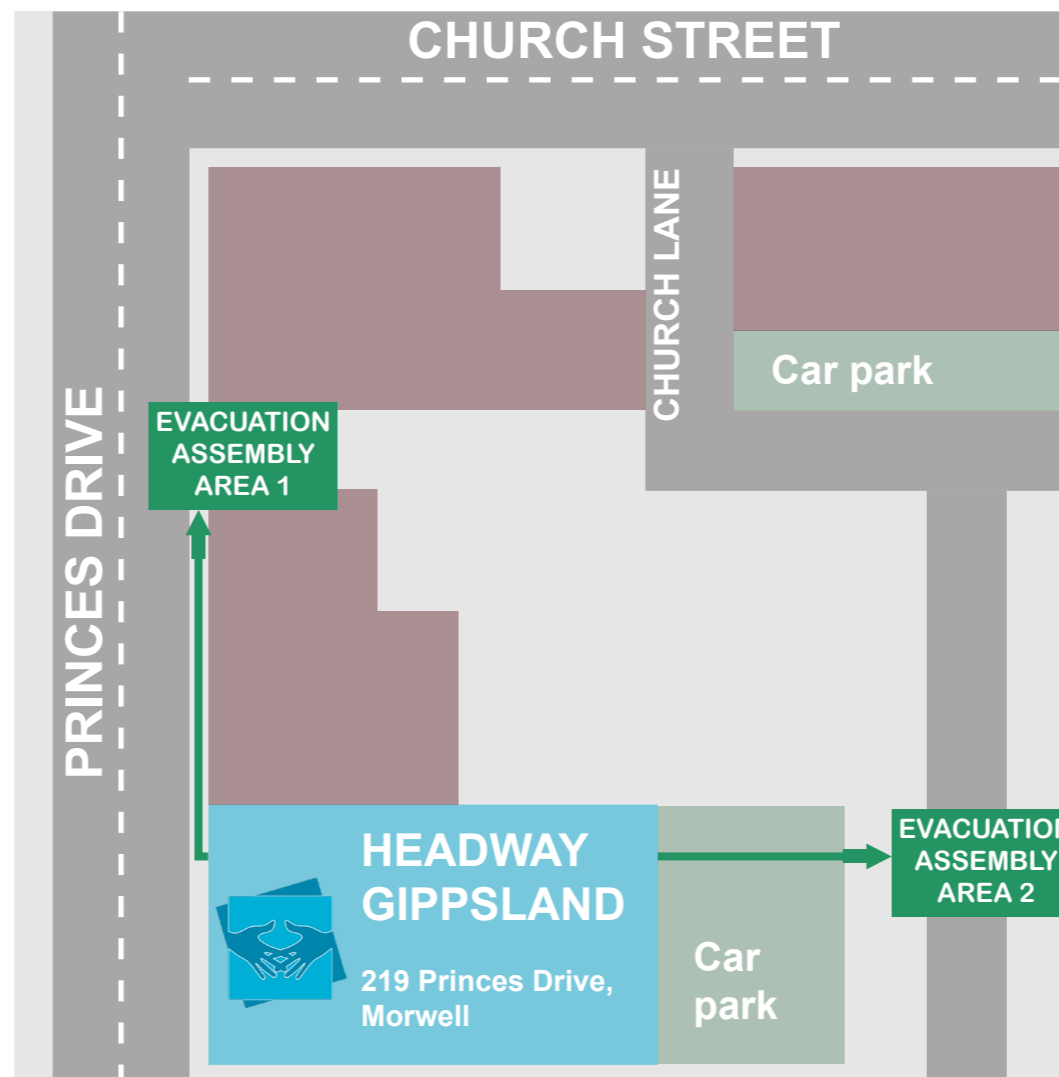
Headway Gippsland
219 Princes Drive
Morwell, VIC 3840



EMERGENCY PROCEDURES

- 1** RAISE THE ALARM, NOTIFY NEARBY OCCUPANTS
PHONE 000
- 2** ASSIST ANY PERSON IN DANGER
IF IT IS SAFE TO DO SO
- 3** MOVE TO THE NEAREST SAFE
EVACUATION ASSEMBLY AREA
- 4** REMAIN AT THE
EVACUATION ASSEMBLY AREA
REPORT ANYONE MISSING TO THE CHIEF WARDEN OR RESPONDING EMERGENCY SERVICES

EVACUATION ASSEMBLY AREAS



LEGEND

- Exit point
- Fire blanket
- Fire extinguisher
- Electric switchboard
- Evacuation route via front door
- Evacuation route via rear door

EMERGENCY TONES

ALERT TONE

WHEN ADVISED BY CHIEF FIRE WARDEN
STANDBY FOR FURTHER ANNOUNCEMENTS

EVACUATION TONE

WHEN ADVISED BY CHIEF FIRE WARDEN
COMMENCE EVACUATION